



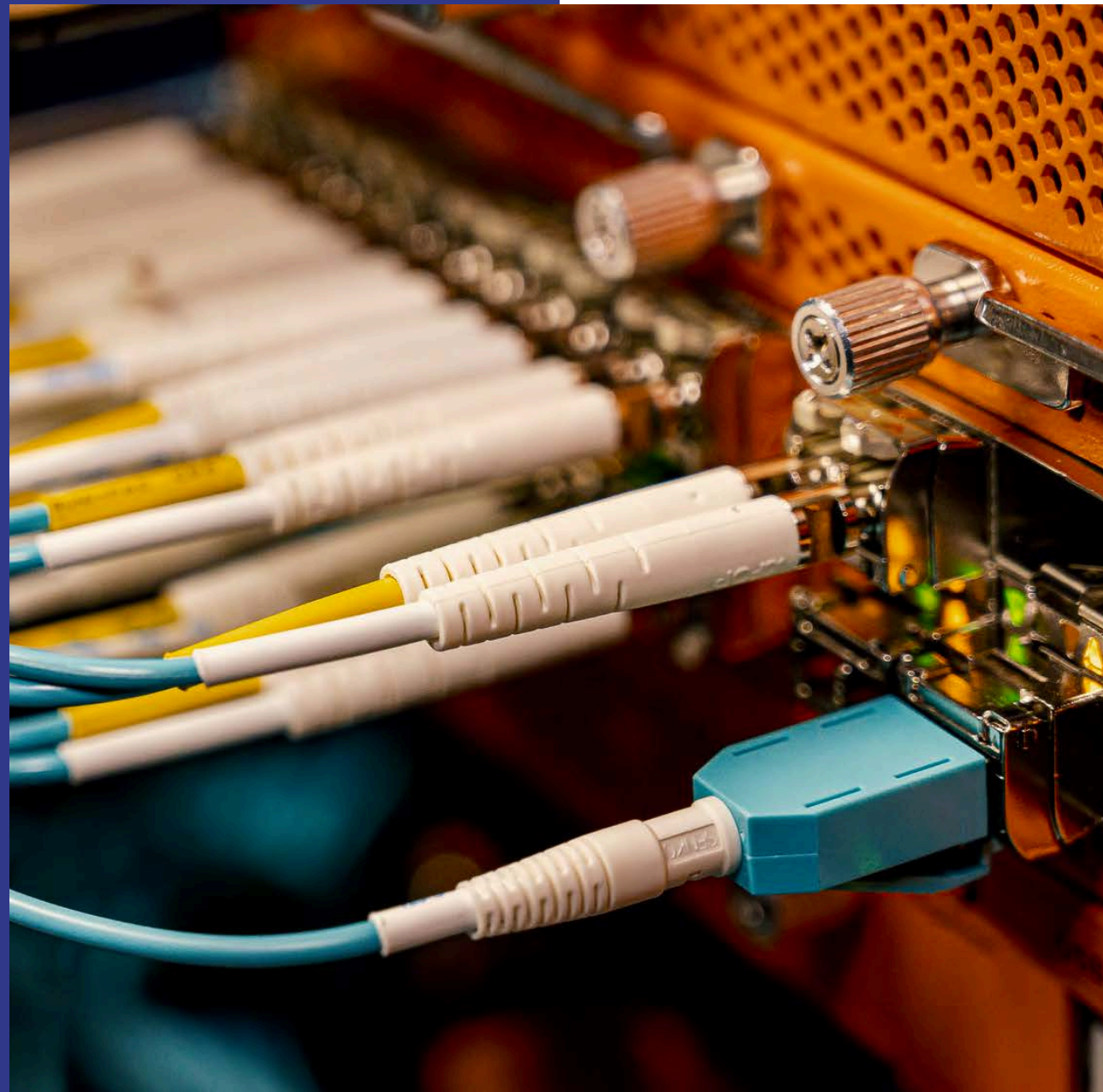
F360™

Revolutionizing Fiber Optic Deployment

A Comprehensive Construction Lifecycle
Management Platform

Effortless. Excellent. Fiber.



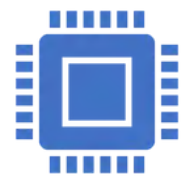


Cost-effective = smarter + faster + efficient

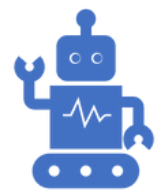
At LiteLinx, **innovation** is at the core of everything we do, and **F360i** is a testament to our commitment to revolutionizing fiber deployment. Designed to **transform** how service providers manage fiber network **construction**, F360i seamlessly integrates cutting-edge **Smart Fiber** technology with efficient project execution, making your deployments **faster, smarter, and more cost-effective.**



What makes **F360i** groundbreaking:



As-built Data: With F360i, your field teams and office operations are always connected. Real-time data from the field is captured and automatically updated, ensuring that your projects remain on track without delays or miscommunication.



Automated Cost-Saving: F360i is designed to streamline fiber construction processes and reduce project OPEX by 20%–30%. By automating resource allocation, tracking material usage, and optimizing workflows, managing crews, predictive invoices, F360i helps you achieve more with less, reducing both time and labor expenses.



litelinx
Effortless. Excellent. Fiber.

Roll



Complete Lifecycle: From initial planning to deployment and final as-built real-time information, F360i provides a full, end-to-end view of your project. It empowers your teams to manage every aspect of construction with precision, eliminating costly errors and rework.

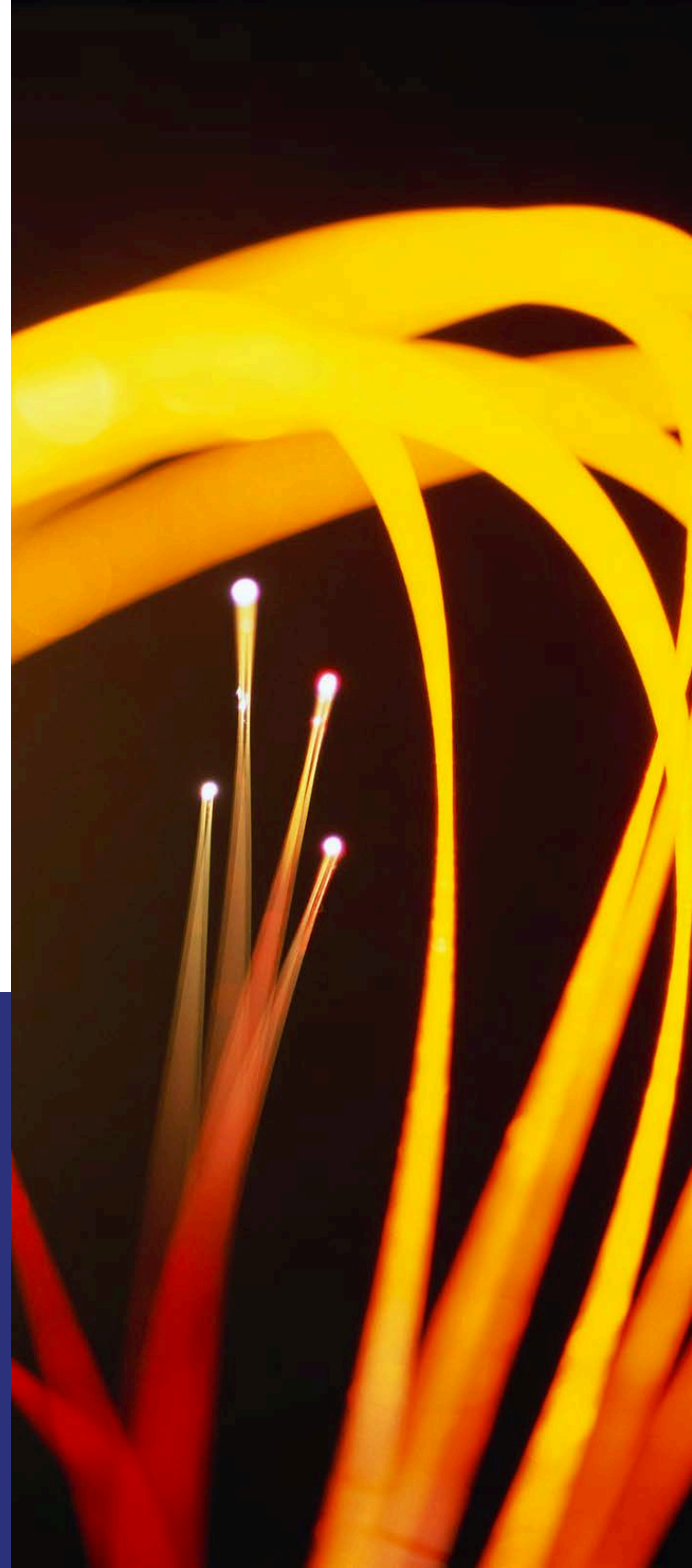


Advanced Project Visibility and Control: With intuitive dashboards, F360i gives you real-time insights into costs, resource allocation, inventory, and timelines, helping you make informed decisions. This transparency ensures that every stakeholder has the information they need, when they need it.



Scalable and Future-Proof: F360i is designed with scalability in mind, making it perfect for both small-scale WISP projects and large-scale fiber deployments. As your network grows, F360i grows with you, providing the tools and flexibility you need to succeed today and in the future.

litelink
Effortless. Excellent. Fiber.



The F360 solution by LiteLinx is a next-generation, all-in-one platform designed to seamlessly integrate inventory, design, execution, and financial management for fiber optic project deployment. With its cutting-edge capabilities, F360 empowers teams at every level, ensuring smarter, faster, and more cost-effective deployments.



Core Capabilities

1. Smart Warehouse Management

Real-Time Inventory Management: Provides Real-time visibility and tracking for various materials such as cables, FOSCs, terminals, and residential components with warehouse scanners and mobile devices.

F360 ID Tags: Links equipment to users or contractors for accurate tracking.

My Truck Feature: Ensures contractors have the right equipment for their tasks, reducing the risk of errors

Automated Auditing: Simplifies and streamlines compliance with detailed inventory reports, reducing human errors.

CORE CAPABILITIES

2.

Design and Playground Database



Shapefile Importation:

Converts designs into visual databases for enhanced mapping.



Playground Database:

Tests and validates design changes before deployment.



Error Prevention:

Safeguards ensure only accurate designs are activated.

CORE CAPABILITIES

3. Work Order and Crew Management



Integrated Workflows:

Links designs, equipment, and crew assignments.



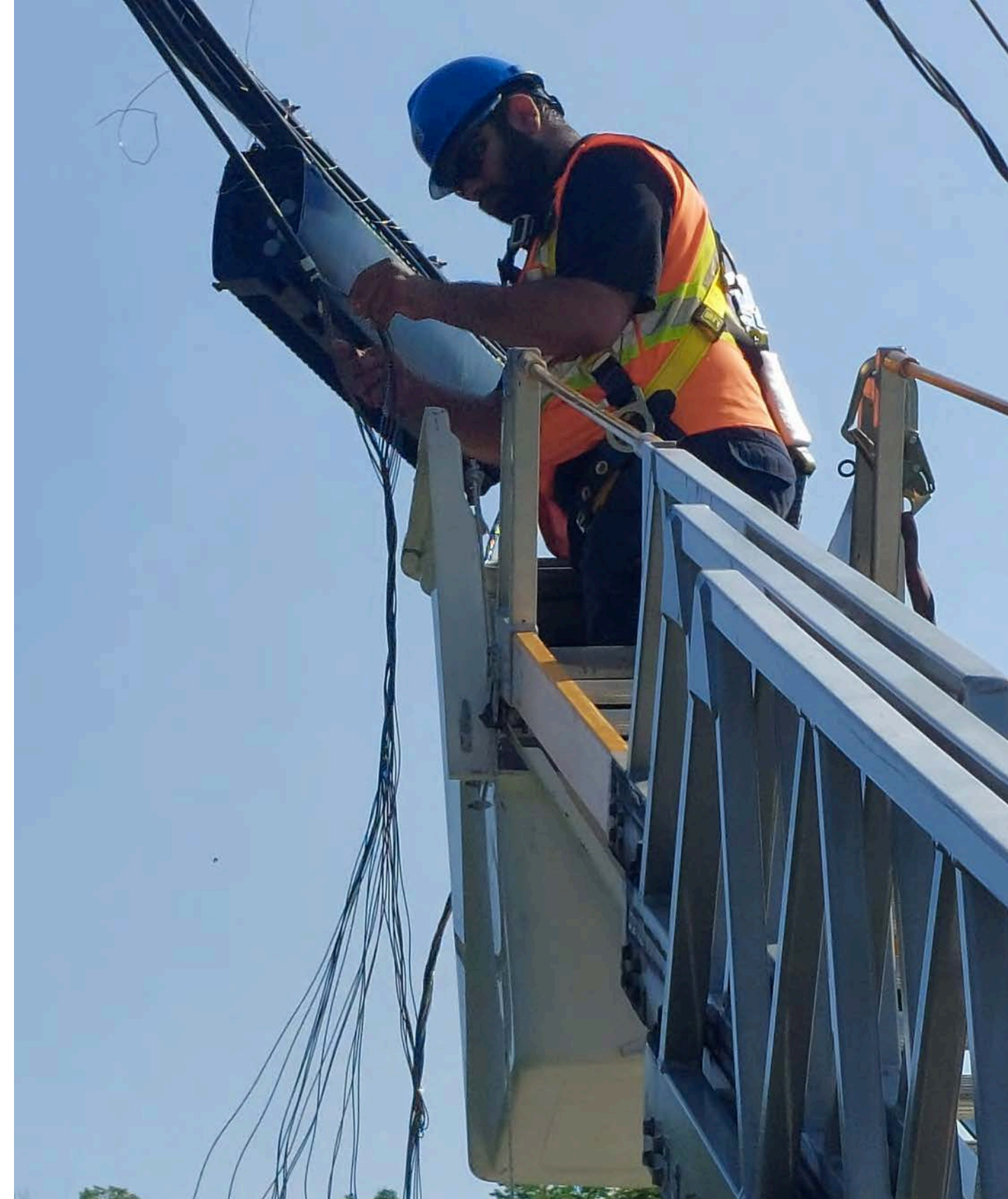
Cost Estimation Tools:

Streamlines budgeting with precise work order predictions.



Waste Reduction:

Prevents mismatches with accurate equipment allocation.



CORE CAPABILITIES

4. As-Built Management



Field Scanning:

Autonomous inventory updates as materials are used



Data Reconciliation:

Compares field data with original designs to ensure accuracy.



Resource Optimization

Identifies and reuses leftover materials effectively.

CORE CAPABILITIES

5. Dashboard and Oversight Tools



Real-Time Project Tracking:

Visualizes progress, permits, and resources on interactive maps.



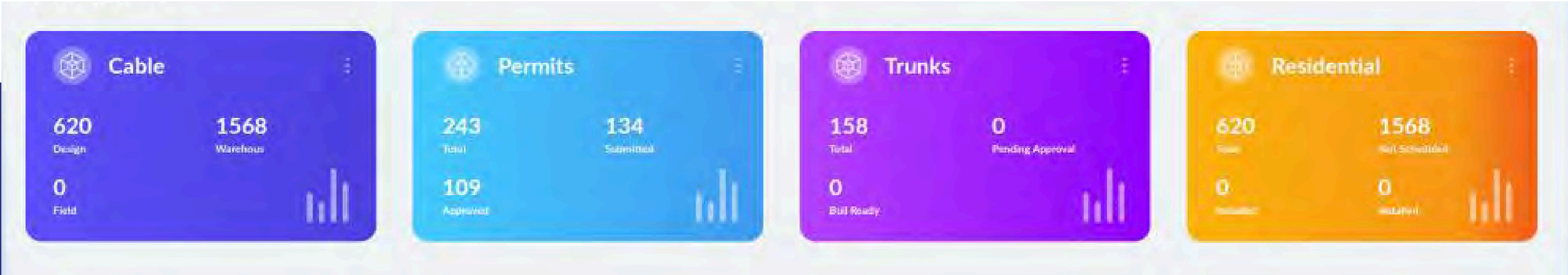
Stakeholder Insights:

Custom dashboards for project managers, accountants, and CFOs.



Financial Oversight:

Tracks inventory value and project costs to assist planning.



CORE CAPABILITIES

6. API-Based Integration



System Connectivity:

Syncs with platforms like Sonar for inventory, purchase orders, and billing.




Customizable Interfaces:

Adapts to unique business needs for seamless data exchange.



Key Benefits

- ✓ **Efficiency:** Reduces errors and optimizes material usage.
- ✓ **Transparency:** Provides real-time insights for all stakeholders.
- ✓ **Cost Savings:** Saves on average 20% – 30% on project costs
- ✓ **Scalability:** Perfect for large-scale deployments, supporting complex data management.
- ✓ **Audit:** Simplifies compliance for funded networks with effortless auditing of progress, inventory, and resources.



F360™ acts as a centralized hub, offering **unparalleled control and insights** into every stage of fiber optic deployment, from the warehouse to the field. With F360, teams work smarter, projects stay on track, and costs are minimized—ensuring success today and into the future.